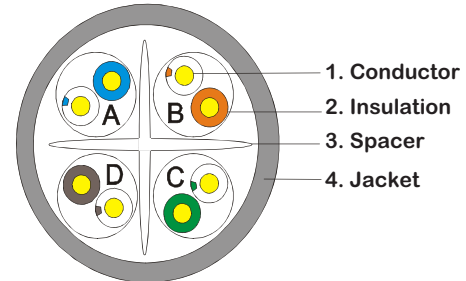
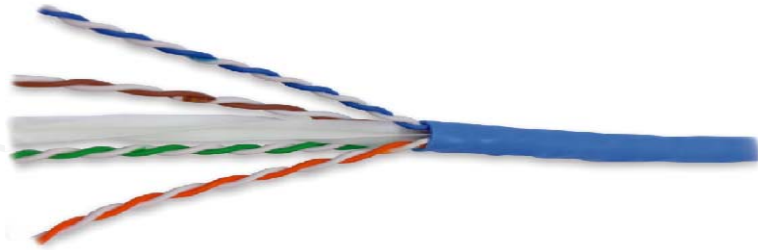


PRENET STRUCTURED CABLING SOLUTIONS

Twisted Pair Cable(UTP),
4 Pairs, Category 6, Indoor



Description:

4 pair unshielded cable (U/UTP) characterized up to 250 MHz, Category 6 solid cable. Capable of handling full broadband and baseband video signals for indoor installation

Specifications:

UL 444, ANSI/TIA/EIA-568B.2-1 and ISO/IEC 11801 2nd edition:2002 which covers the requirements for unshielded twisted pair (UTP) cables of 100Ω, category 6.
Fire protection – Flame retardant, compliant to IEC 60332-1.

Application:

Horizontal Distribution & Backbone Cabling
4/16 Mbps Token Ring (IEEE 802.5)
10/100/1000 BASE-T (IEEE 802.3)
155 Mbps ATM
100 Mbps TP-PMD
ISDN, ADSL

Materials:

Conductive material: Solid Bare Copper
Conductor insulation: HDPE
Cable jacket: PVC/LSZH

Technical characteristics:

Conductor diameter: 23 AWG
Insulated conductor diameter: 1.01 ± 0.2 mm
Outer cable diameter: 6.3 ± 0.3 mm
Jacket thickness: 0.55 mm \pm 0.05mm
Pulling strength: 110N
Minimum bend radius: 4 x Outer cable diameter
Operating temperature: -20°C to +75°C

PRENET STRUCTURED CABLING SOLUTIONS

Twisted Pair Cable(UTP),
4 Pairs, Category 6, Indoor



Electrical characteristics:

Frequency, MHz	RL	Attenuation, dB	NEXT, dB	PSNEXT, dB	ELFEXT, dB	PSELFEXT, dB
1.0	20.0	1.9	74.0	72.3	68.0	65.0
4.0	23.0	3.7	65.0	63.3	56.0	53.0
8.0	24.5	5.3	60.7	58.8	49.9	46.9
10.0	25.0	5.9	59.0	57.3	48.0	45.0
16.0	25.0	7.5	56.0	54.2	43.8	40.9
20.0	25.0	8.4	55.0	52.8	42.0	39.0
25.0	24.3	9.5	53.3	41.3	40.0	37.0
31.25	23.6	10.6	52.0	49.9	38.1	35.1
62.5	21.5	15.4	47.0	45.4	32.1	29.1
100.0	20.1	19.8	44.0	42.3	28.0	25.0
200.0	18.0	29.0	34.0	37.8	22.0	19.0
250.0	17.3	32.8	38.0	36.3	20.0	17.0

DC Resistance	Max 9.38 Ohm/100 m
DC Resistance Unbalance	Max 5%
Mutual Capacitance	Max 5.6 nF/100m
Capacitance Unbalance Pair	Max 330pF/100m
Impedance 1~250MHz	100 ±15 Ω
Propagation Delay	Max. 536 ns/100m @ 250 MHz
Dielectric Strength DC KV/sec.	2.5 / 2
Propagation Delay Skew	Max 45 ns/100m
Insulation resistance MΩ-305m	Min. 100

Ordering:

SCS-UTP4-C6-PVC-GY Twisted Pair cable UTP, category 6, 4 pairs, solid PVC, 305m box

SCS-UTP4-C6-LSZH-GN Twisted Pair cable UTP, category 6, 4 pairs, solid LSZH, 305m box

Headquarters:	Canada	United Kingdom	UAE	India
4511 Singer Court, Suite 201 Chantilly, VA 20151 Ph: +1 703 653 1100, Fax: +1 703 803 8319	155 Terence Mathews Crescent Unit 5, Kanata, Ottawa Ontario K2M 2A8, Canada Ph: +1 613-599-9754 Fax: +1 613-599-9614	Witan Court, 305 Upper Fourth Street, Milton Keynes, MK9 1EH. United Kingdom Ph: +44(0) 2031 301 710	Opterna MEA Fz Co. PO Box 293862 B14 Airport Free Zone, UAE Ph: +971 42997676	Plot No. 2, Corporate Office Cochin Special Economic Zone Kakkanad, Kochi – 682 037 Ph: +91-484-2413223/2413224
Regional Office – West 373 E Vintage Park Drive, Foster City, California 94404 Ph: +1 650 212 3456	Regional Office – East 1900 AM Drive, Suite 101 Quakertown, PA 18951 Ph: +1 215 538 8700 Fax: +1 215 538 8789			